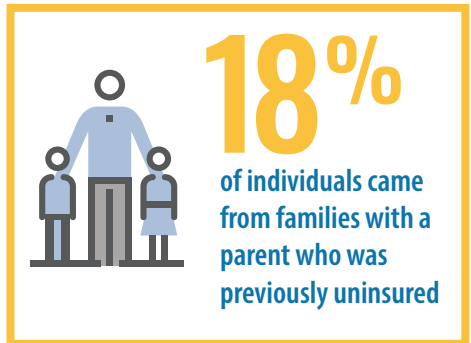
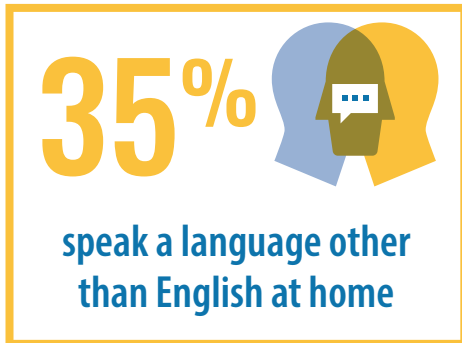
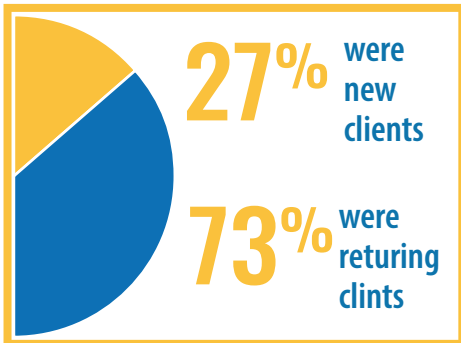


2023 OPEN ENROLLMENT **IMPACT** REPORT

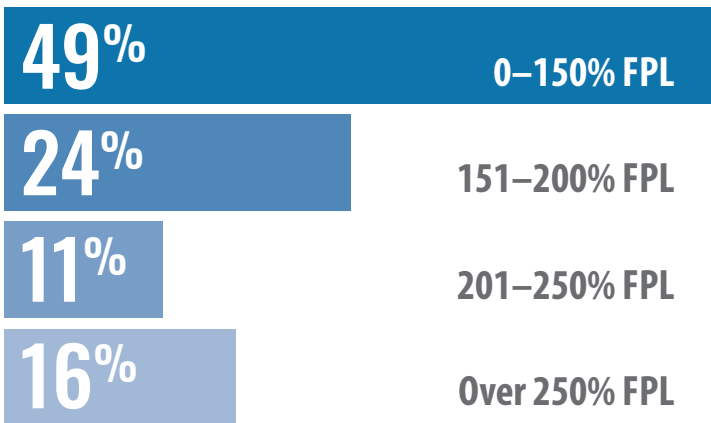
Texas continues to have one of the highest uninsured rates in the nation at nearly 20%. During the 2023 Marketplace Open Enrollment season from November 1, 2022 to January 15, 2023, the Prosper Health Coverage program worked diligently to help more Central Texans enroll in affordable health coverage. Thank you to the generous funders, collaborative partners, talented team, and dedicated volunteers who made the 2023 Open Enrollment season a success!



WHO WE SERVED

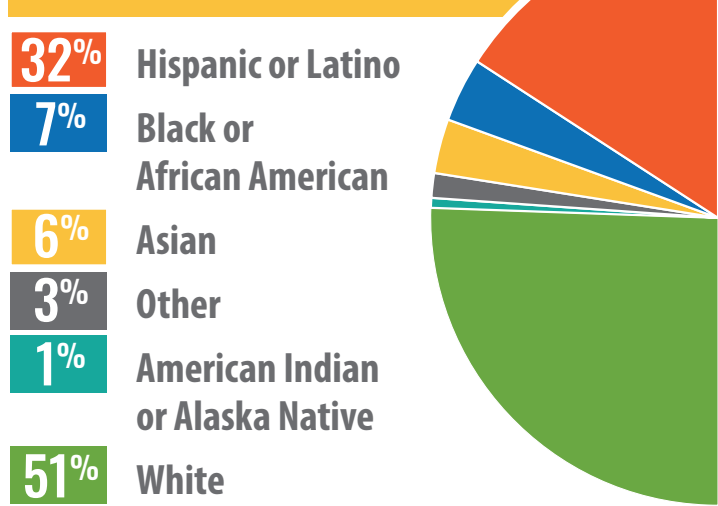


CLIENT INCOME*



*Majority of clients earn under 150% of the Federal Poverty Level (FPL), which in 2022 was \$20,385 for an individual and \$41,625 for a family of four.

CLIENT RACE-ETHNICITY



2023 OPEN ENROLLMENT **IMPACT REPORT**



Each year, we partner with the **Health Alliance for Austin Musicians (HAAM)** to help Central Texas Musicians enroll in affordable health plans

2,091 Musicians accessed health coverage

Up **10%** from last year

More than **\$25 MILLION** in Advance Premium Tax Credits claimed to make plans more affordable



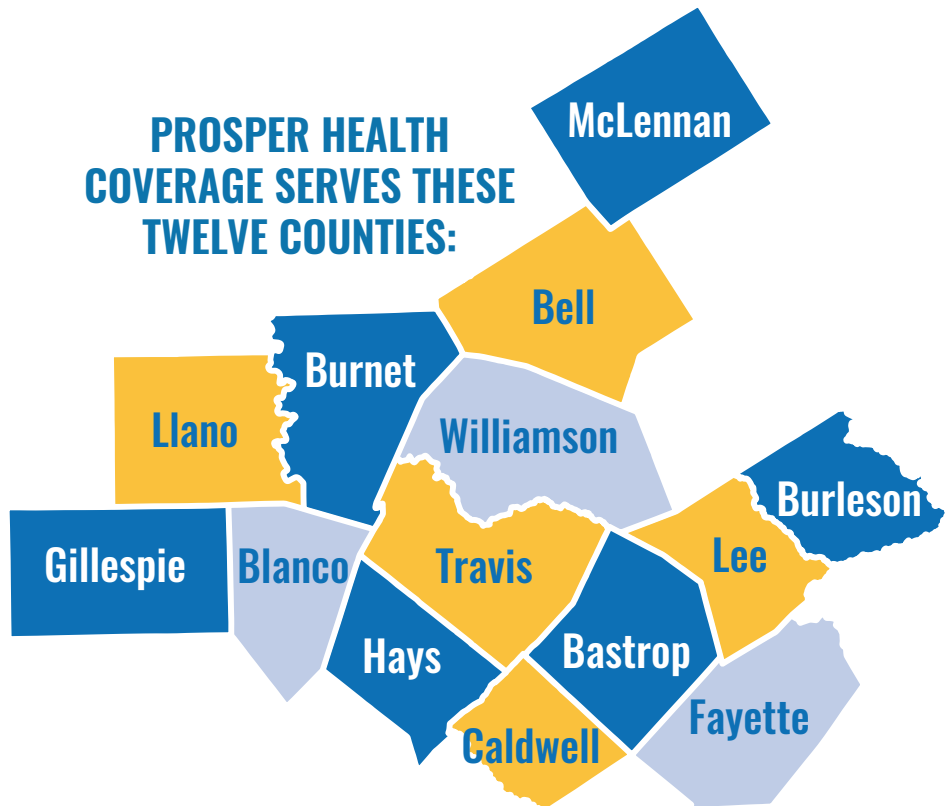
116 volunteers donated nearly **2000** hours of service

We served clients from 163 ZIP codes

HALF OF OUR CLIENTS LIVED IN ONE OF THESE TEN ZIP CODES:

78660 78744
78702 78748
78704 78752
78723 78753
78741 78758

PROSPER HEALTH COVERAGE SERVES THESE TWELVE COUNTIES:



CMS Disclaimer: This program is supported by the Centers for Medicare and Medicaid Services (CMS) of the U.S. Department of Health and Human Services (HHS) as part of a financial assistance award totaling \$1,407,854 with 100 percent funded by CMS/HHS. The contents are those of the author (s) and do not necessarily represent the official views of, nor an endorsement, by CMS/HHS, or the U.S. Government.

